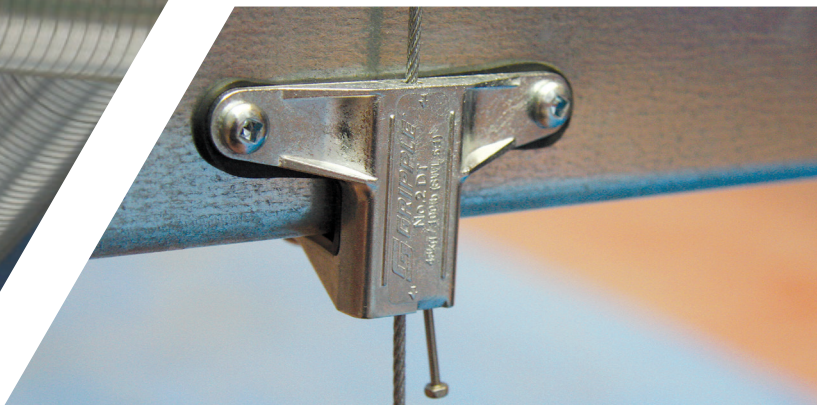




HVAC Solutions

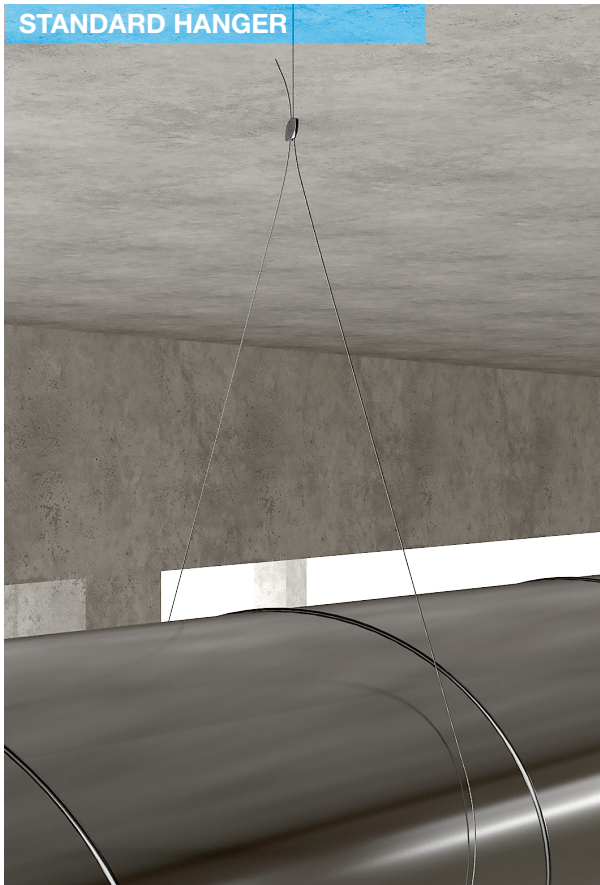
Complete suspension systems for a variety of ductwork and HVAC services



- Ready-to-use kits
- Easy and efficient installation
- Versatile suspension options

HVAC Suspension Solutions

STANDARD HANGER



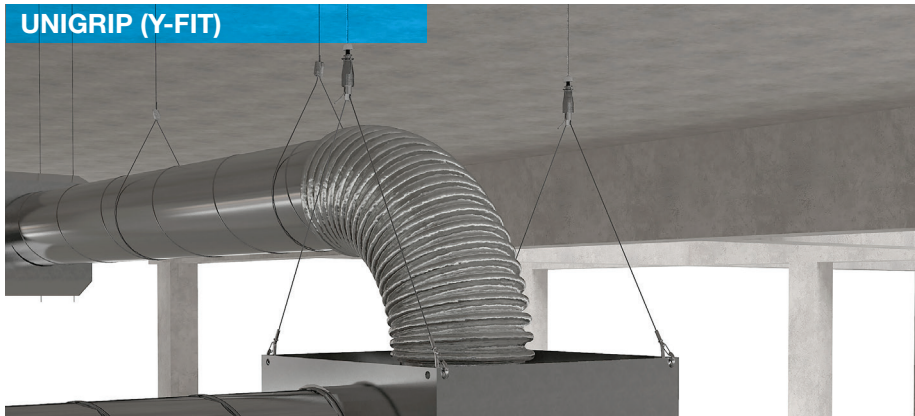
UNIGRIP (CENTRAL EXIT)



UNIGRIP CALIBRA



UNIGRIP (Y-FIT)



BUTTERFLY TRAPEZE



DUCT TRAPEZE





CATENARY KIT & C-CLIP



EXPRESS HANGER

The Gripple® range of hangers for HVAC applications has been developed to provide a fast and versatile solution for suspending ductwork, heaters, air conditioning, radiant panels, and plenum boxes.

Our products are designed to save you time and labor costs, thus improving the efficiency of your installation. Gripple kits do not require cutting or filing, and offer aesthetic design without compromising on strength.



UNIVERSAL BRACKET



FAST TRAK (STANDARD)



UNIVERSAL CLAMP

Standard Hanger

Cable hanger kit containing the original Gripple HangFast fastener, for suspending a variety of HVAC, piping, lighting, and electrical services.

- The only Gripple Hanger available in sizes No.1 thru No.5, with Safe Working Loads from 25 thru 715 lbs per hanger
- Ideal for fast suspension of any suspended service
- Up to 6 times faster to install than traditional methods
- Versatile and simple to use
- Strong, safe, and industry approved
- Aesthetically discreet and lightweight
- Fastener can be released with a Release Key to adjust or level the height of the service

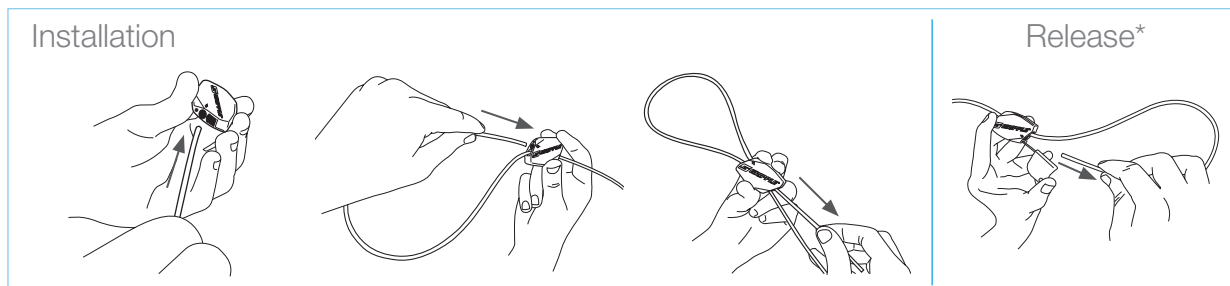


Available in sizes No.1 - No.5



Supplied as ready-to-use kits with a length of cable, Standard fastener, and end fixing of your choice.

5:1 SAFETY FACTOR	No.1	No.2	No.3	No.4	No.5
LOAD RATING PER HANGER	25 lbs	100 lbs	200 lbs	495 lbs	715 lbs



* When releasing: 1. Remove load, 2. Insert release key into hole, 3. Pull tail wire out

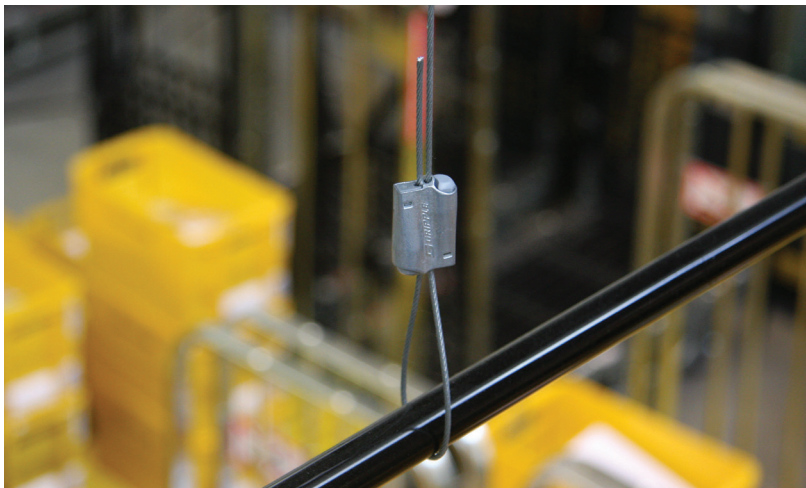
Express Hanger

For the fast suspension of a variety of services, designed with an easy push-button release mechanism.

- The Express No.1 is ideal for signage, shopfitting, lighting, and other lightweight fixtures
- The Express No.2 is ideal for mechanical and electrical services
- Up to 6 times faster to install than traditional methods
- Discreet and aesthetic design
- Ergonomic push buttons are easy to use
- No release key required to adjust or level the service

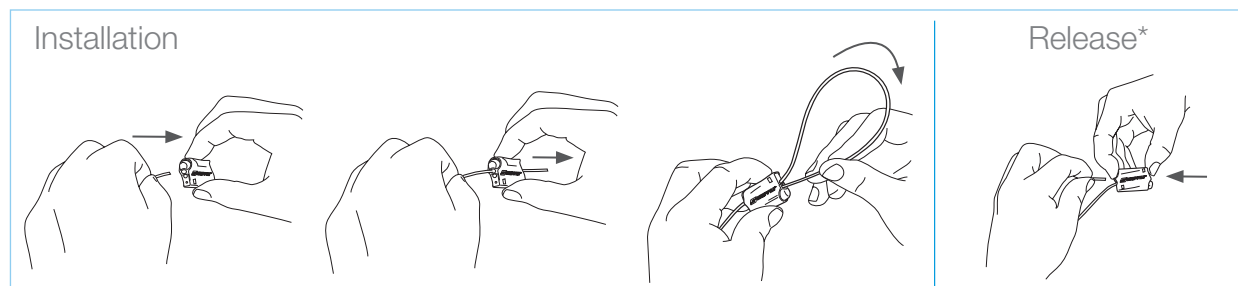


Available in sizes No.1 - No.2



Supplied as ready-to-use kits with a length of cable, Express fastener, and end fixing of your choice.

5:1 SAFETY FACTOR	No.1	No.2
LOAD RATING PER HANGER	33 lbs	100 lbs



* When releasing: 1. Remove load, 2. Push release buttons, 3. Pull tail wire out

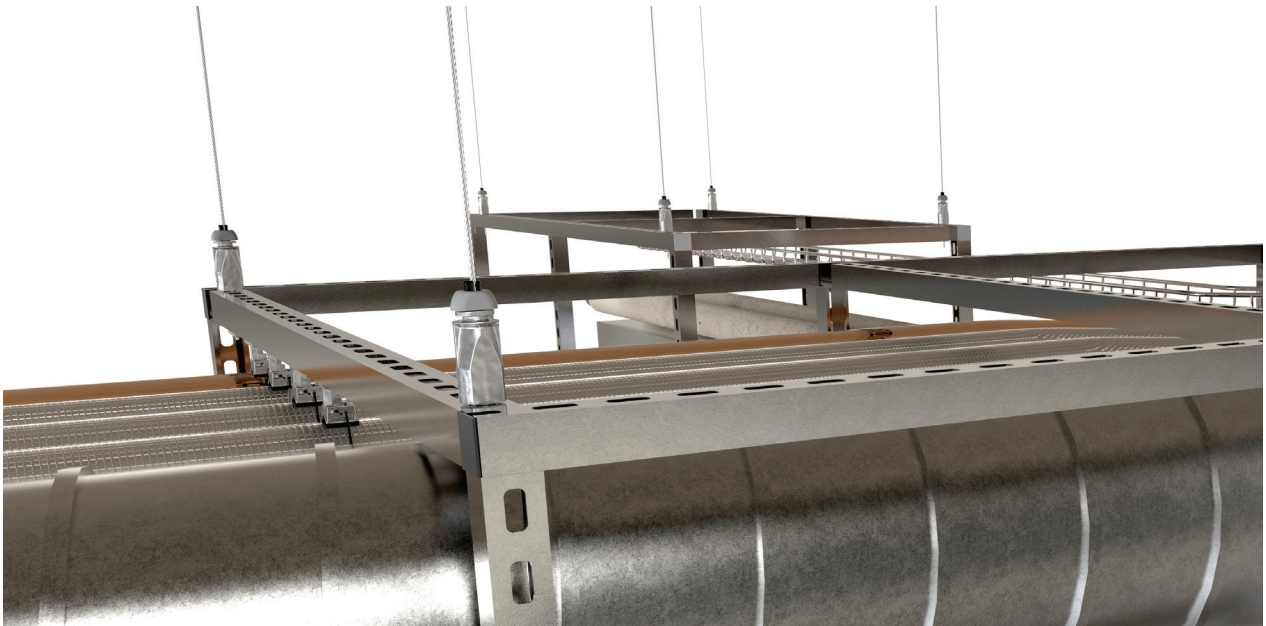
UniGrip Hanger

Designed for fast suspension of cable containment, piping, ductwork, HVAC systems and modules.

- Enhanced load performance
- Three times lighter than the Trapeze Plus product it succeeds
- Larger button delivers easier, one handed adjustment
- Locking indicator now offers visible certainty
- Ideal for creating multi-tiered installations
- Ideal for use with Gripple Pipe Bracket and QT Universal Clamp for piping suspensions



Available in sizes No. 2 - 4

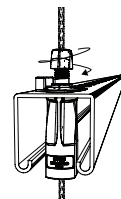
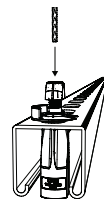
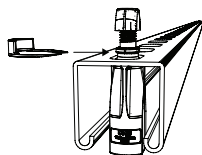
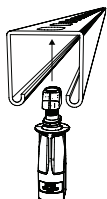


Supplied as ready-to-use kits with a length of cable, UniGrip Hanger, and end fixing of your choice.

5:1 SAFETY FACTOR LOAD RATING*	No. 2	No. 3	No. 4
	120 lbs	240 lbs	550 lbs

* When UniGrip is utilized in conjunction with the Hook or 90° Eyelet end fixings the Safety Factor becomes 4:1.

Installation



UniGrip Foot Variants

The range of UniGrip 'feet' ensures the product suits all possible building service applications.

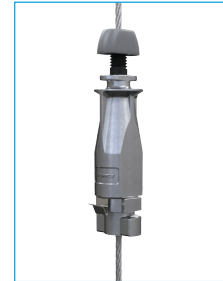
CENTRAL EXIT

- **Ideal for:** Suspending piping, rectangular ductwork, air conditioning units, electrical containment, heating and ventilation units, chilled beams, busbar, modules, or clevis hangers in conjunction with a square washer and channel nut or a hex nut.



QTUB

- **Ideal for:** Securing into slots of Gripple Pipe Brackets to suspend piping, electrical containment, ductwork and other mechanical services when used with Gripple Pipe Brackets.



SIDE EXIT

- **Ideal for:** Suspended ceilings, heavy duty lighting, busbar, plenum boxes, single pipe runs, clevis hangers, or applications where exiting centrally clashes with services.



HOOK

- **Ideal for:** Fast attachment to heating and ventilation units, heavy duty signage, cable basket/tray, radiant panels, chilled beams.



CABLE BASKET ADAPTER

- **Ideal for:** suspending cable basket runs in single or multi-tier installations.



CALIBRA

- **Ideal for:** Suspending radiant panels, chilled beams, heating, ventilation, and cooling units and provides the ability for finite height adjustments of services without removing the load.



Y-FIT

- **Ideal for:** Suspending cable containment, signage, heating and cooling units, heavy duty lighting, radiant panels, chilled beams, balanced pipework, plenum boxes.



PHENOLIC ADAPTER

- **Ideal for:** Phenolic & PIR fabricated ductwork.



	Standard	Central Exit	Side Exit	QTUB	Calibra	Snap Hook	Y-Fit	Cable Basket Adapter	Phenolic Adapter
UniGrip No. 2									
UniGrip No. 3									
UniGrip No. 4									

 Available
  Unavailable

Supplied as ready-to-use kits with a length of cable, UniGrip Hanger, and end fixing of your choice.

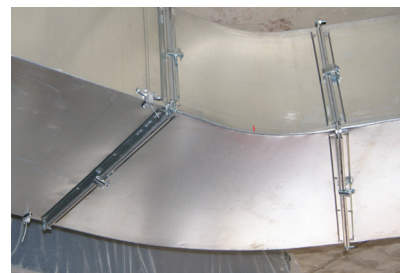
Duct Trapeze Hanger

Ideal for fast suspension of rectangular ducting or similar services.

- Eliminates the need for a strut support
- Suitable for ducting made from 0.6 - 1.5 mm gauge steel
- Spreads the load across three fixing points
- Attaches with self-drilling screws or pop rivets (not provided)
- Optional rubber pad prevents air leakage and dampens vibration
- Release pin allows rapid height adjustment

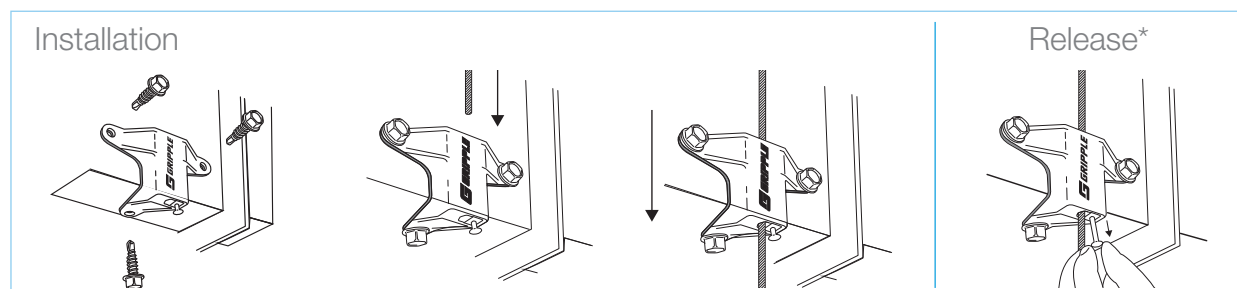


Available in size No. 2
Rubber Pad is Sold Separately



Supplied as ready-to-use kits with a length of cable, Duct Trapeze fastener and end fixing of your choice.

5:1 SAFETY FACTOR LOAD RATING	No. 2
	100 lbs

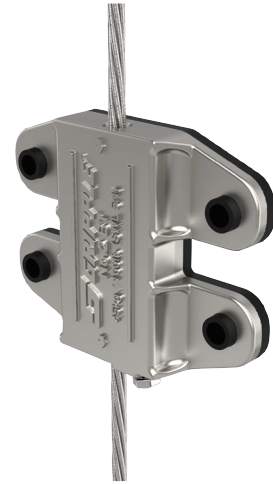


*When releasing: 1. Remove load, 2. Pull pin, 3. Raise or lower on cable

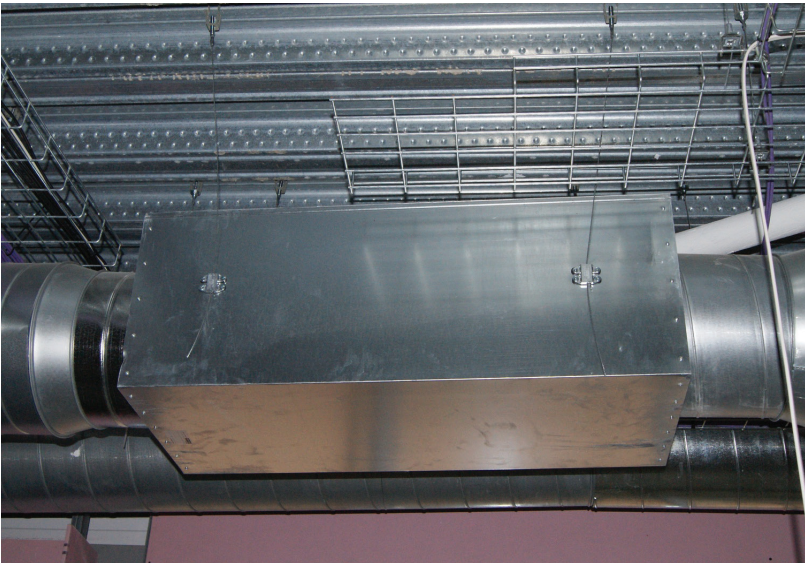
Butterfly Trapeze Hanger

Ideal for fast suspension of rectangular ducting or similar services that are hung close to the ceiling.

- Simple height adjustment using the integral pin prior to applying load
- Spreads the load across four fixing points
- Rubber pad prevents air leakage and dampens vibration
- Can be used for multi-tiered installations

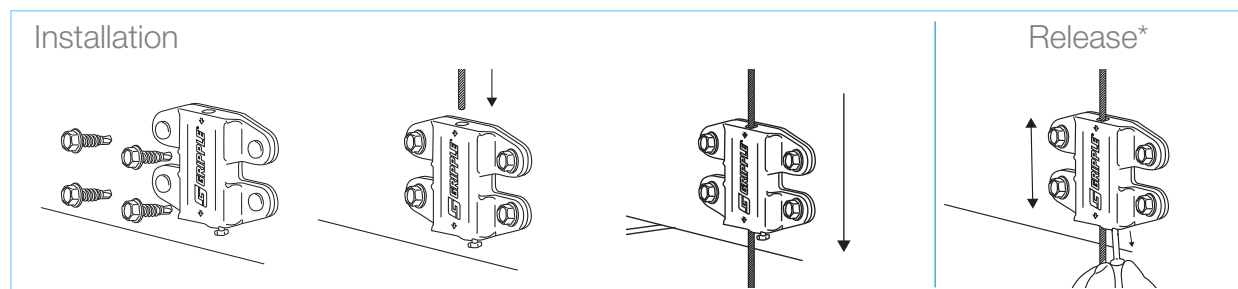


Available in size No. 2



Supplied as ready-to-use kits with a length of cable, Butterfly Trapeze fastener, and end fixing of your choice.

5:1 SAFETY FACTOR LOAD RATING	No. 2
	100 lbs



*When releasing: 1. Remove load, 2. Pull pin, 3. Raise or lower on cable

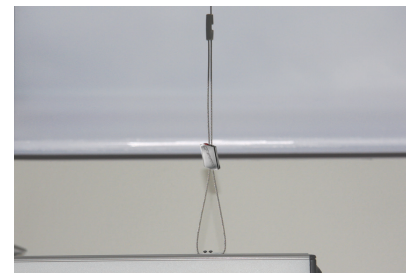
Stainless Steel Hanger

Used to suspend a variety of mechanical and electrical services in the food industry and high humidity environments.

- Stainless steel body and springs are corrosion resistant and long-lasting
- Ceramic rollers for extra strength and corrosion resistance
- Aesthetically discreet and lightweight
- Available in two sizes load rated up to 200 lbs SWL
- Available for use with Loop, 1/4" Stud, Hook, Y-Hook, Toggle, and Y-Toggle end fixings
- Fastener can be released with a Release Key to adjust or level the height of the service
- Like all Gripple hangers, not suitable for use in chlorinated or swimming pool environments



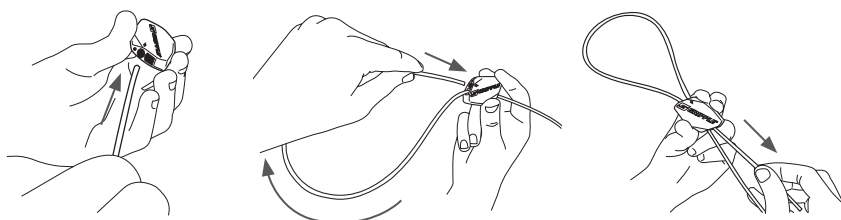
Available in sizes No. 2 - No. 3



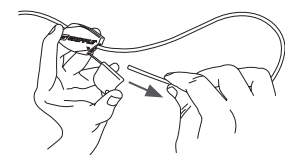
Supplied as ready-to-use kits with a length of cable, stainless steel fastener and end fixing of your choice.

5:1 SAFETY FACTOR LOAD RATING	No. 2	No. 3
	100 lbs	200 lbs

Installation



Release



* When releasing: 1. Remove load, 2. Release key into hole, 3. Pull tail wire out.

Cable Strut Kit & C-Clip Hanger

Create secure, overhead spans by running high strength cable between two fixed points. Ideal for applications where no direct vertical anchor point is available. The Gripple C-Clip, an innovative twist-on/off device, allows you to suspend from anywhere along the horizontal span.

- Visually discreet and lightweight
- Allows for suspension of services exactly where needed
- No tools needed to install
- Available in 1/8" and 1/4" cable diameters, for suspensions up to 220 lbs per span
- C-Clip End Fixing allows for horizontal and vertical adjustment
- C-Clip Cams lock solidly in place, even at angles up to 60°

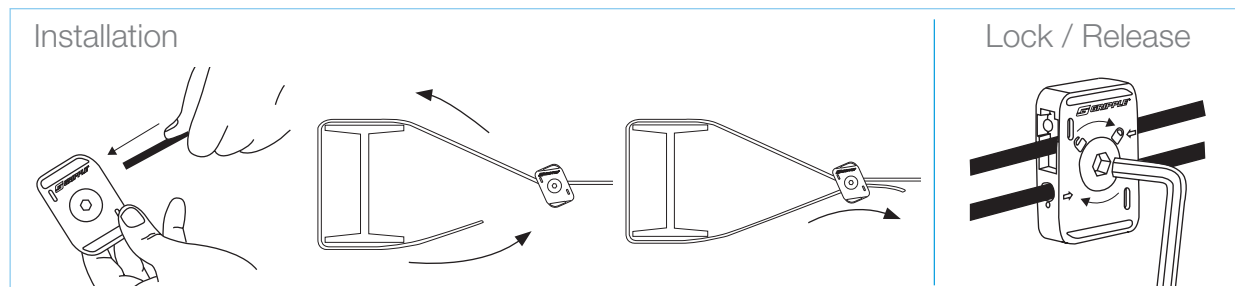


Available in 1/8" and 1/4" systems



Cable Strut supplied as ready-to-use kits, including galvanized cable cut to length, two fasteners, and a Release Key. (C-Clip Hangers sold separately)

5:1 SAFETY FACTOR LOAD RATING CABLE SPAN	1/8"	1/4"
	66 lbs	220 lbs



Fast Trak

Pre-fabricated rigid support solution offering speed, flexibility, and efficient use of space, for the installation of electrical containment, ductwork and other mechanical services.

- **Quick** - up to 6X faster to install than traditional suspension systems
- **Safe** - pre-fabricated system which removes the need to cut threaded rod or channel on-site
- **Tool free adjustment** - bracket can be moved up and down the tracks to accommodate changes in position during installation
- **Zero waste** – tracks bend neatly under bracket*
- **Space saver** – four-sided bracket provides suspension point on every face; 'ideal for pre-fab installations or multi-tiered configurations to accommodate additional services
- **Easy measurement** – indicators at each end of the bracket offer reference points when marking fixing points on the ceiling; level markers on tracks every 5 slots (2 1/4" increments) for easy leveling without tools
- **Neat & tidy** - system can be 'stacked' on-site to reduce storage requirements



Available in nine bracket widths and five drop lengths

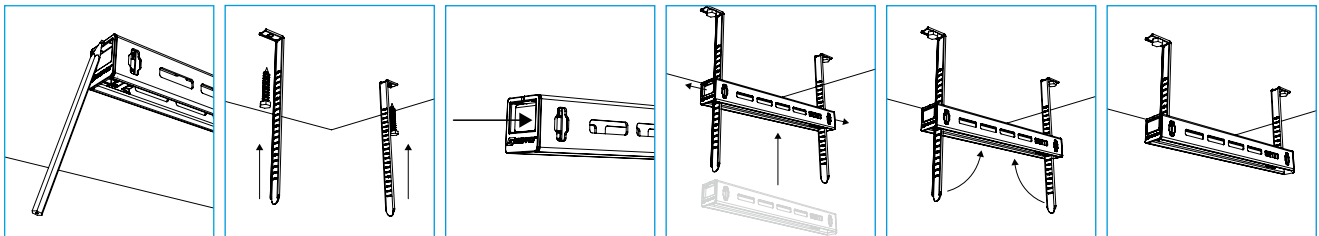


3:1 SAFETY FACTOR
LOAD RATING

Per Bracket

440 lbs

Installation



Product Codes

How to work out your unique product code

1

CHOOSE YOUR PRODUCT



Standard Hanger No.1
HF1



Standard Hanger No.2
HF2



Standard Hanger No.3
HF3



Standard Hanger No.4
HF4



Standard Hanger No.5
HF5



Express No.1
XP1



Express No.2
XP2



Stainless Steel Hanger No. 2
HF2



Stainless Steel Hanger No. 3
HF3



UniGrip
UG2
UG3



UniGrip Center Exit
UG2-FN
UG3-FN
UG4-FN



UniGrip Side Exit
UG2-SE-FN
UG3-SE-FN



UniGrip Hook
UG2-HK



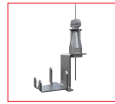
UniGrip QTUB
UG2-QTUB
UG3-QTUB



UniGrip Calibra
UG2-CAL



UniGrip Y-Fit
UG2-Y
UG3-Y



UniGrip Phenolic Adapter
UG2-PA

* Replace the FN code with CN for Strut Nut, or to SN for Spring Strut Nut.

* Replace the FN code with CN for Strut Nut, or to SN for Spring Strut Nut.

2

CHOOSE YOUR END FIXING



Loop
LG



Stud
S*G



Toggle
TG



Hook
HG



Mini Hook
MHG



Eyelet
EYQG



45° Eyelet
EY453/8G



90° Eyelet
EY90°G



Cladding Hook
CHG



Karabiner
KG



Shot Fire
SF35



Shot Fire
C925



Shot Fire for Post Tension Concrete
C945



Shot Fire for Post Tension Concrete
NS45



Shot Fire for Post Tension Concrete
ALH32



Swivel Toggle
SXTG
For use with Spider only

*Stud available in 1/4" or 3/8". 90 Degree Eyelet available in 1/4" or 3/8". In place of asterisk in code enter Q for 1/4" or 3/8 for 3/8".

3

CHOOSE YOUR CABLE LENGTH

5FT

10FT

15FT

20FT

30FT

Enter your unique product code (e.g. UG2-LG-10FT):

									-																						*
--	--	--	--	--	--	--	--	--	---	--	--	--	--	--	--	--	--	--	--	--	--	--	--	--	--	--	--	--	--	--	---

PRODUCT

END FIXING

CABLE LENGTH

Installation Design Service

Submit your drawings and our technical team will provide a custom product specification based on your project requirements. Call 866 474 7753 for further information.

Accessories

Individual fasteners are available separately as an accessory to allow multi-tiered installations from one suspension cable.



Butterfly Trapeze

Ideal for use with light ductwork. Combine Butterfly Trapeze as an accessory with any Trapeze kit for multi-tiered installations. Maximum load rating of 100 lbs with a 5:1 safety factor.

Product code: BT2



Duct Trapeze

Ideal for use with rectangular ductwork. Combine Duct Trapeze as an accessory with any Trapeze kit for multi-tiered installations. Maximum load rating of 100 lbs with a 5:1 safety factor.

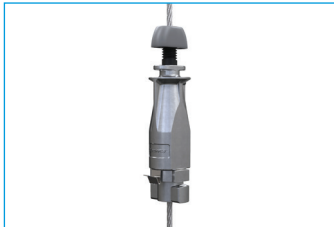
Product code: DT2



Standard UniGrip

Ideal for Piping, rectangular ductwork, air conditioning units, electrical containment, heating and ventilation units, multi-tier applications.

Product code: UG2 and UG3



UniGrip QTUB

Ideal for Piping, electrical containment, ductwork and other mechanical services when used with Gripper Pipe Support Brackets.

Product code: UG2-QTUB and UG3-QTUB



UniGrip Central Exit

Ideal for Piping, rectangular ductwork, air conditioning units, electrical containment, heating and ventilation units, chilled beams, busbar, modules, and multi-tier applications.

Product code: UG2-SE-FN and UG3-SE-FN

A variety of additional accessories are available to complement the product range, increasing versatility and ease of installation.



Spider (Wood Form)

Universal, versatile, cast-in-place concrete insert for wood form construction, allowing for fast and easy suspension of all building services.

Product Code: SX-WF



Spider (Metal Deck)

Universal, versatile, cast-in-place concrete insert for metal deck construction, allowing for fast and easy suspension of all building services.

Product Code: SX-MD



Universal Clamp

Ideal for the quick and easy support of spiral ductwork in conjunction with threaded rod.

Up to 6 times faster than traditional methods.

Product Code: GC2-3/8-24IN



Corner Saddle

Right-angled molding attaches to bottom corners of rectangular duct to protect against friction from the cable hanger. Available in standard and magnetic versions.

Product Code: CORNER-SADDLE



Trapeze Bracket

Combine with Trapeze No.2 and No.3 for easy attachment to rectangular ductwork or services. Maximum load rating of 100 lbs (No.2), 200 lbs (No.3) with a 5:1 safety factor.

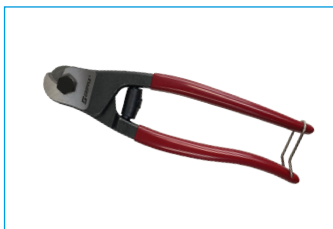
Product Code: TPZ-BRACKET



Beam and Purlin Clips

Available in a variety of sizes and models for attachment to beams and purlins.

Product Codes: GCB24, GCB59, GCB1016, or GCB1720



Cable Cutters

Purpose-made for use on up to 3/16" cable. For use when terminating cable lengths.

Product Code: CUTTER-GRIPPLE

www.gripple.com

grippleinc@gripple.com

Gripple Inc

1611 Emily Lane
Aurora, IL 60502
USA

T | +1 866 474 7753

F | +1 800 654 0689

E | grippleinc@gripple.com

Gripple Ltd (Headquarters)

The Old West Gun Works
Savile Street East
Sheffield S4 7UQ
UK

T | +44 (0) 800 018 4264

F | +44 (0) 114 275 1155

E | info@gripple.com

Gripple Europe SARL

1, rue du Commerce
BP 37
67211 Obernai Cedex
France

T | +33 (0)3 88 95 44 95

F | +33 (0)3 88 95 08 78

E | frinfo@gripple.com

Gripple India

C-115, Industrial Area
Phase I, Naraina
New Delhi-110028
India

T | +91 11-40582703

F | +91 11-40582703

E | ininfo@gripple.com

Gripple Canada Inc

6665 Tomken Road
Unit 9-10 Mississauga
Ontario L5T 2C4
Canada

T | +1 905 458 8700

F | +1 800 654 0689

E | cainfo@gripple.com

Gripple Japan K.K

2-57 Tsukizi-cho
Hyogo-ku, Kobe-shi
Hyogo, 652-0845
Japan

T | +81 (0) 78 681 2121

F | +81 (0) 78 681 2122

E | japan@gripple.com

BROC-HVAC-US

Digital AUG. 2022

Please refer to www.gripple.com for
the most up to date user advice and
product information.



A GLIDE company



© 2022 Gripple.

Gripple is a registered trademark of Gripple Limited.
Company registered in England No. 1772901, VAT Reg No. GB 600 1951 88