

# Cable Strut Kit & C-Clip Hanger

Create secure, overhead spans by running high strength cable between two fixed points. Ideal for applications where no direct vertical anchor point is available. The Grippler C-Clip, an innovative twist-on/off device, allows you to suspend from anywhere along the horizontal span.

- Visually discreet and lightweight
- Allows for suspension of services exactly where needed
- No tools needed to install
- Available in 1/8" and 1/4" cable diameters, for suspensions up to 220 lbs per span
- C-Clip End Fixing allows for horizontal and vertical adjustment
- C-Clip Cams lock solidly in place, even at angles up to 60°

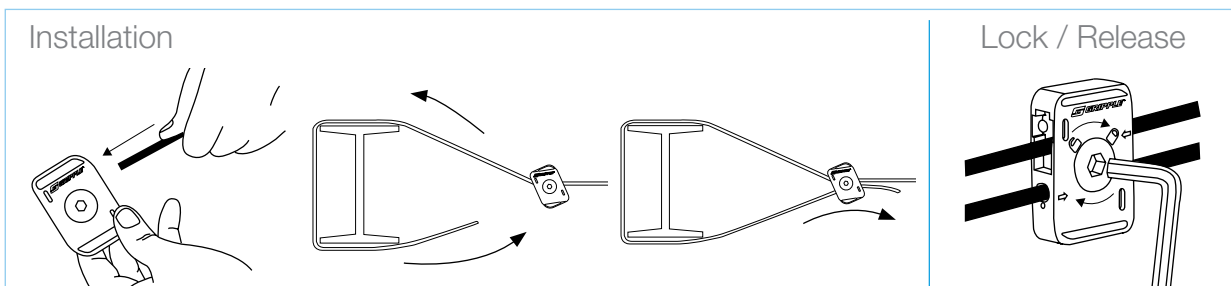


Available in 1/8" and 1/4" systems



Cable Strut supplied as ready-to-use kits, including galvanized cable cut to length, two fasteners, and a Release Key. (C-Clip Hangers sold separately)

5:1 SAFETY FACTOR LOAD RATING CABLE SPAN	1/8"	1/4"
	66 lbs	220 lbs



# Cable Strut Kit Codes

How to work out your unique product code

## 1 CHOOSE YOUR PRODUCT



1/8" Cable Strut  
CTI-1/8



1/4" Cable Strut  
CTI-1/4

## 2 CHOOSE YOUR CABLE LENGTH

10FT

15FT

20FT

25FT

50FT

75FT

100FT

Enter your unique product code (e.g. CTI-1/8-75FT):

<input type="text"/>	<input type="text"/>	<input type="text"/>	<input type="text"/>	<input type="text"/>	<input type="text"/>	<input type="text"/>	-	<input type="text"/>	<input type="text"/>	<input type="text"/>	<input type="text"/>	<input type="text"/>
----------------------	----------------------	----------------------	----------------------	----------------------	----------------------	----------------------	---	----------------------	----------------------	----------------------	----------------------	----------------------

PRODUCT

CABLE LENGTH

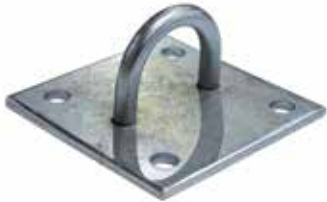
C-Clip End Fixing can be ordered to suspend any Gripper hanger from the Cable Strut Kit (see product code pages).

Cable Strut Wall Brackets are available as a wall attachment point for the Cable Strut Kit using the code below.



**C-Clip 1/8"**  
End Fixing Code  
CC-1/8

**C-Clip 1/4"**  
End Fixing Code  
CC-1/4



CAT-BRACKET-4IN